

COZVIEW/COZSIM INSTALLATION GUIDE

COZView/COZSim integrates an easy to use user interface for pre and post processing of the reservoir simulation results, a technically rigorous 3D, 3-phase, 4-component, extended black oil simulator, and a net present value (NPV) optimization functionality for evaluation of CO₂-EOR in oil reservoirs.

*Developed by NITEC
LLC under a Federal
Assistance Agreement
with the U.S.
Department of
Energy/National
Energy Technology
Laboratory*

Last Update 12/14/2012

Table of Contents

0	
	Table of Contents	<i>i</i>
1	Prerequisites	1
2	Base Installation	2
3	Post Installation Configuration	8
4	One Time Intel Fortran Redistributables Install	17
5	SQL Server	17

1 Prerequisites

This Installation for COZView/COZSim is intended for systems running Microsoft Windows 7 (32bit or 64bit) which are up to date on service packs and patches. It assumes that Microsoft SQL Server is not installed or that Microsoft SQL Server 2008 Express is installed, see SQL Server section for further details. It also assumes that the user doing the install has sufficient administrative rights to allow the various installers to correctly run.

Note the Setup program mentioned below checks the system for required infrastructure components and will download and install them as needed.

2 Base Installation

If you downloaded from the Nitec LLC web site go to the where you saved the **COZSetup.exe** file and double click on it. If you are using an install disk go to the Installation folder and double click on **setup.exe**.

COZSetup.exe with screens related to unzipping the installation to a temporary folder then it launches **setup.exe** for you.

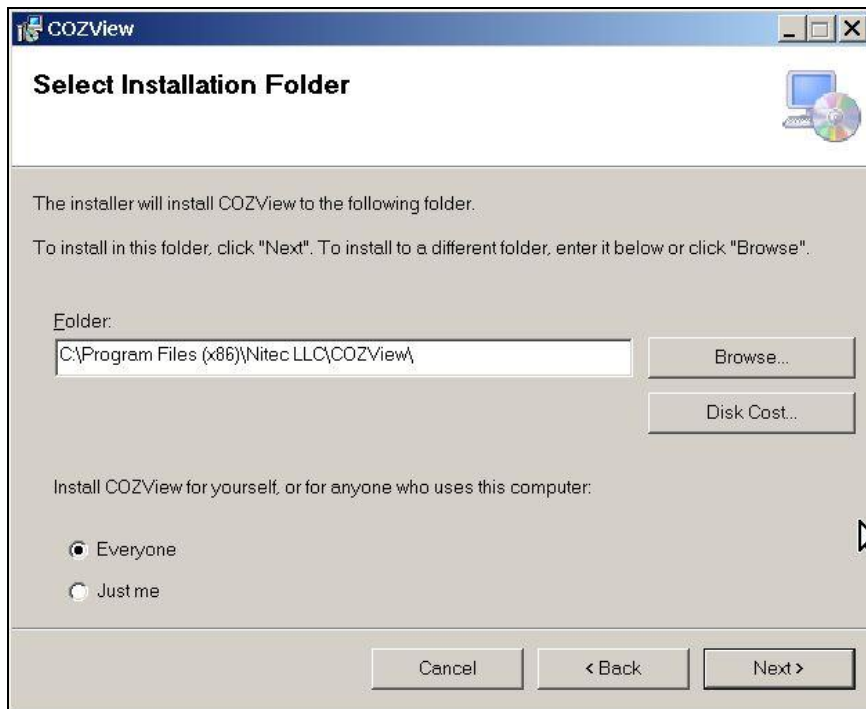
Setup.exe will launch the base installation of **COZView/COZSim**.

Depending on the state of the system up to five more products related to Microsoft .Net components and Microsoft SQL Server 2008 Express will appear. Several of these will require system reboots. This typically will only occur on the initial installation.

The **COZView Setup Wizard** window will appear.

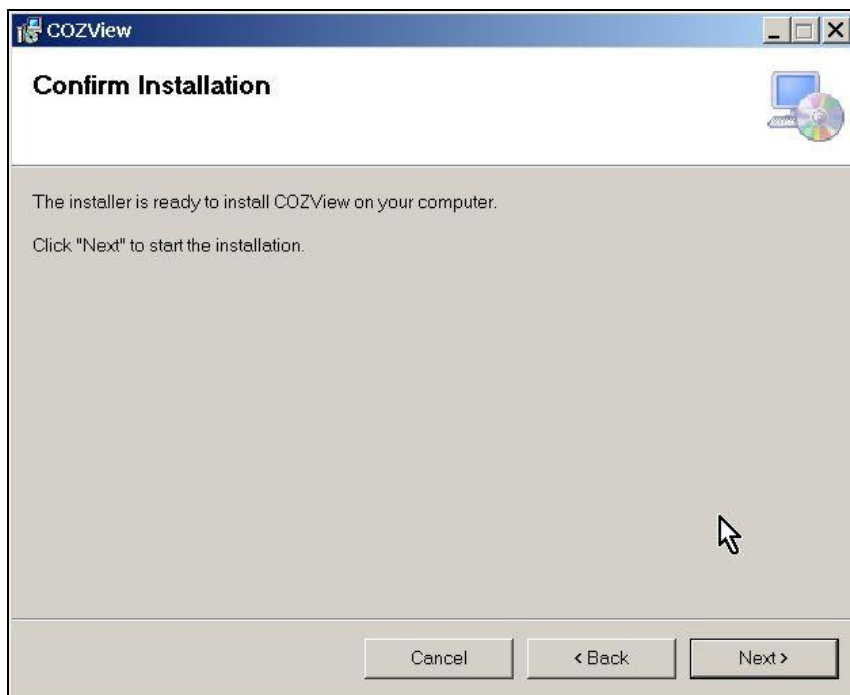


Select **Next**.

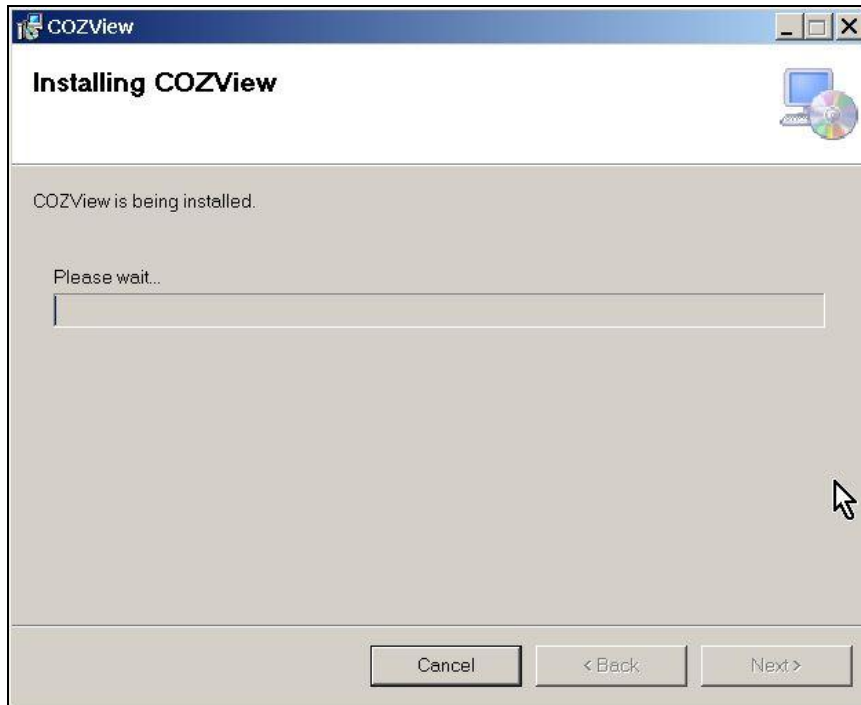


A default location for **COZView/COZSim** will be identified. If the user wishes to store the software in a different area, the folder location can be changed. The default **Everyone** should be selected.

Select **Next**.



The installation will be started.



A message will appear:

Do you want to allow the following program to make changes to this computer?

Program Name COZView.msi

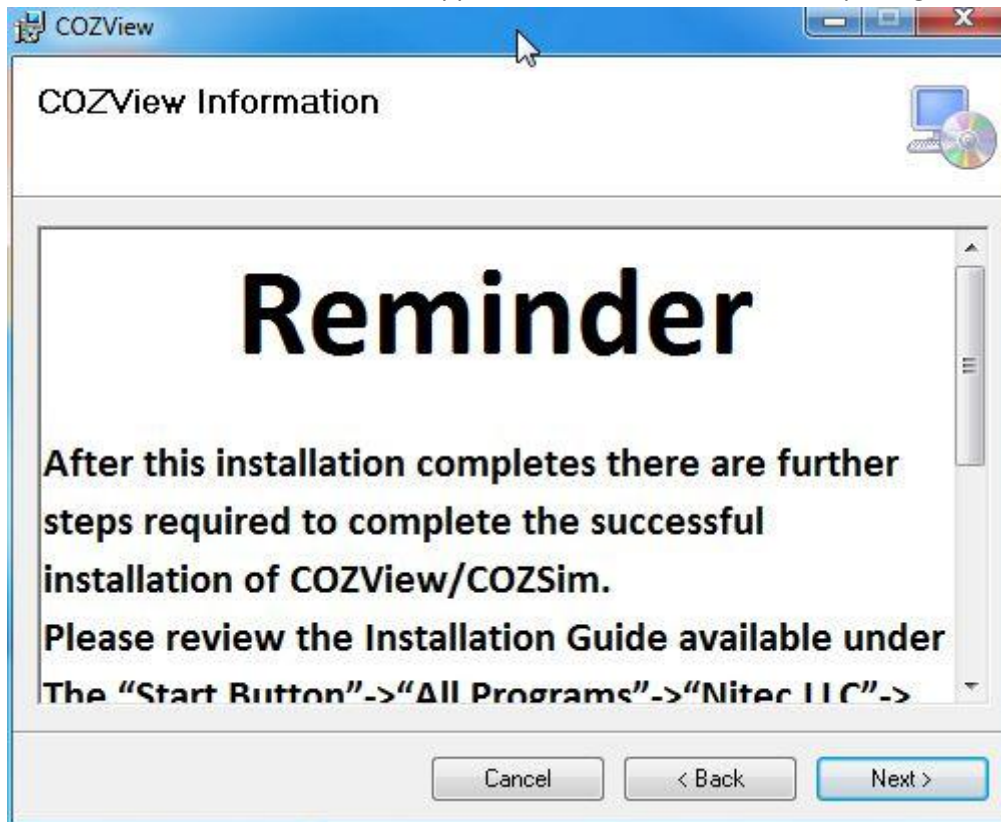
Select **Yes**.

A Registration screen will appear.



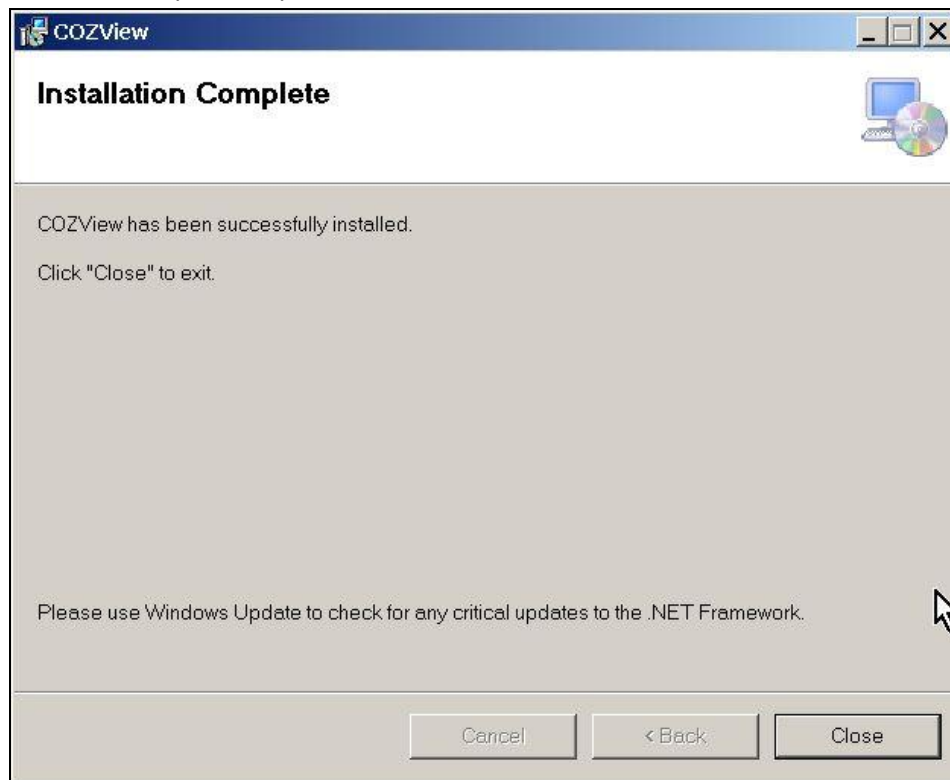
Select the "Register Now..." button if this is a first installation on this machine. Completing the registration will allow a license to be generated for this machine, which is required for the software to run. For updates this can be skipped. Select **Next** to continue.

A COZView Information screen will appear with a reminder about completing the installation.



Select **Next** to continue.

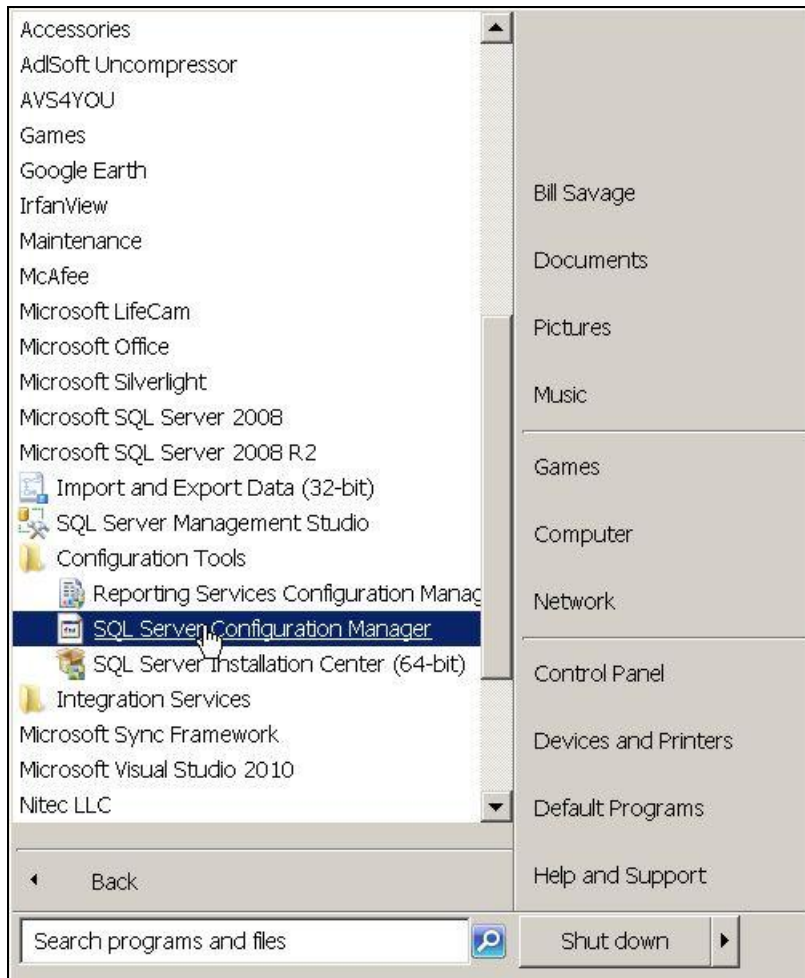
Select **Close** upon completion of the installation.



3 Post Installation Configuration

One time Microsoft SQL Server 2008 Express configuration

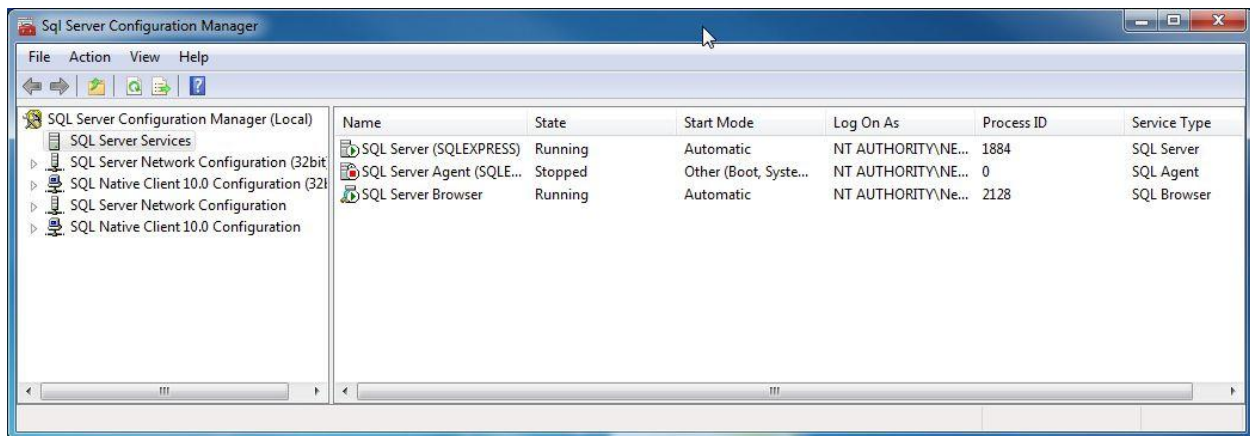
Click the **Start** button and select **All Programs** scroll to “Microsoft SQL Server 2008” or “Microsoft SQL Server 2008 R2” and expand it. Select “Configuration Tools” and expand it. Select “SQL Server Configuration Manager”.



A User Account Control Warning Window may appear asking for permission for the program to make changes to your system.

Click **Yes**

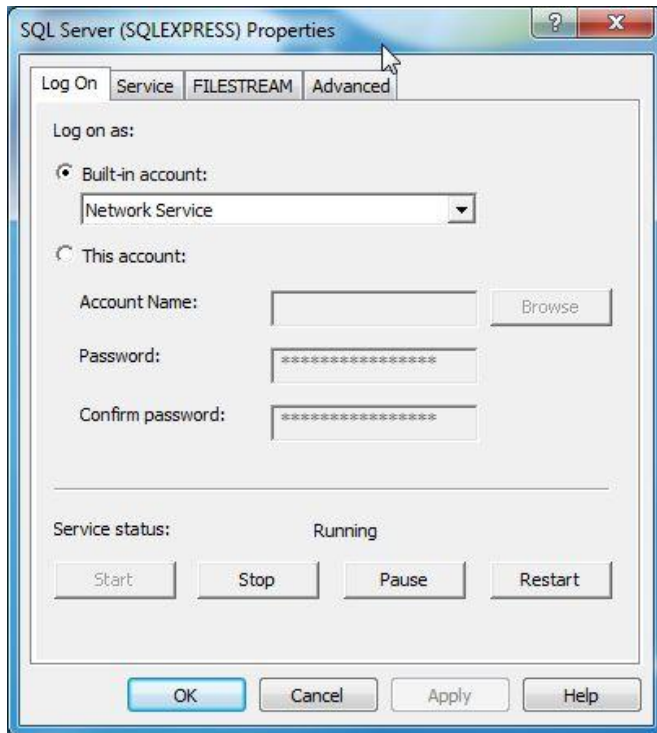
A screen similar to the following will open.



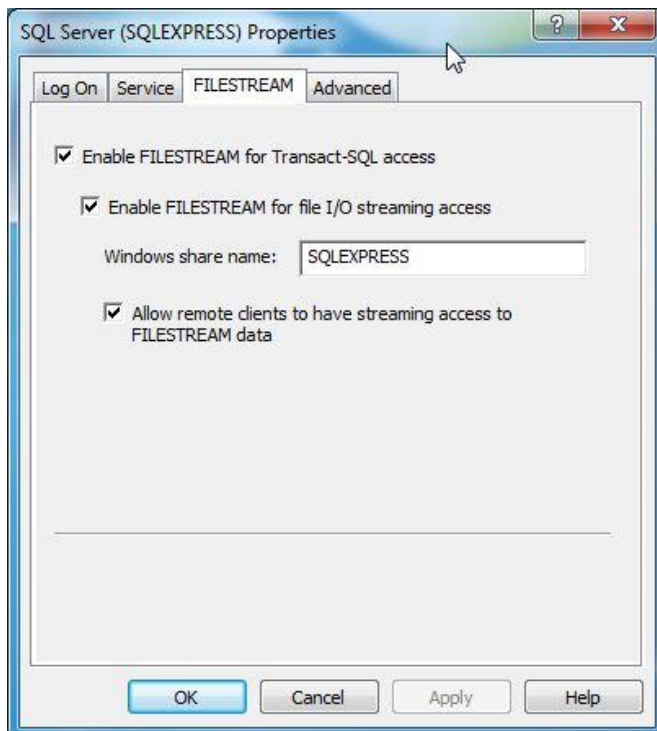
If the right window does not show as displayed above, select “SQL Server Services” in the left window.

Right Click on “SQL Server (SQLEXPRESS)” in the right window and select **Properties** in the pop up box.

A screen similar to the following will open.



Click on the FILESTREAM tab



Select each of the checkbox's in order, leaving the Default SQLEXPRESS name for the Windows share name.

Select **OK**.

On the main screen left hand column select each of the SQL Server network Configuration Options in turn

SQL Server Network Configuration (32bit)

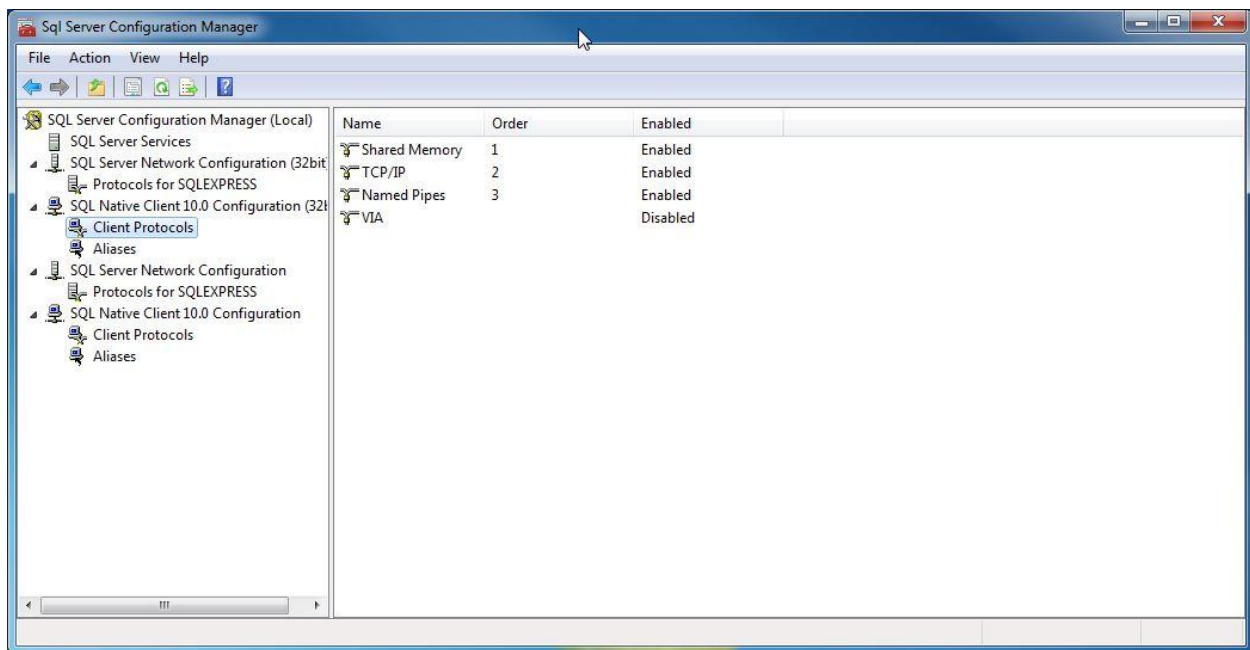
SQL Native Client 10.0 Configuration (32bit)

SQL Server Network Configuration

SQL Server Native Client 10.0 Configuration

For each of these Select the **Protocols** or **Client Protocols** items. In the right hand window “Shared Memory”, “TCP/IP” and “Named Piped” should all show as Enabled. If they are not Right Click those that are not and select Enabled from the popup list.

Example



Reselect “SQL Server Services” and in the right window Right Click on “SQL Server (SQLEXPRESS)” in the right window and select **Restart** from the popup menu.

After the restart check in the right window for “SQL Server Browser Running”.

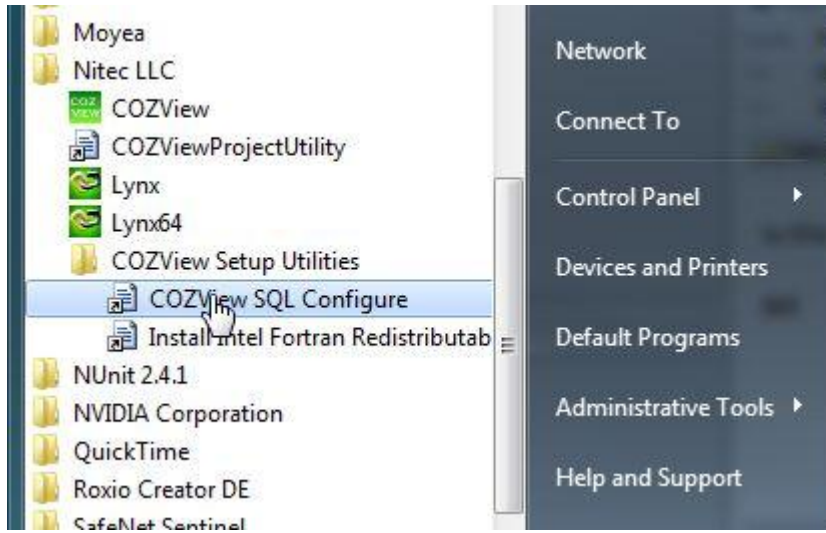
If it is not Right Click it and from the popup select **Properties**. Check on the service tab that the “Start Mode” is set to “Automatic”. If not change it and click OK.

Right Click “SQL Server Browser” and select Start.

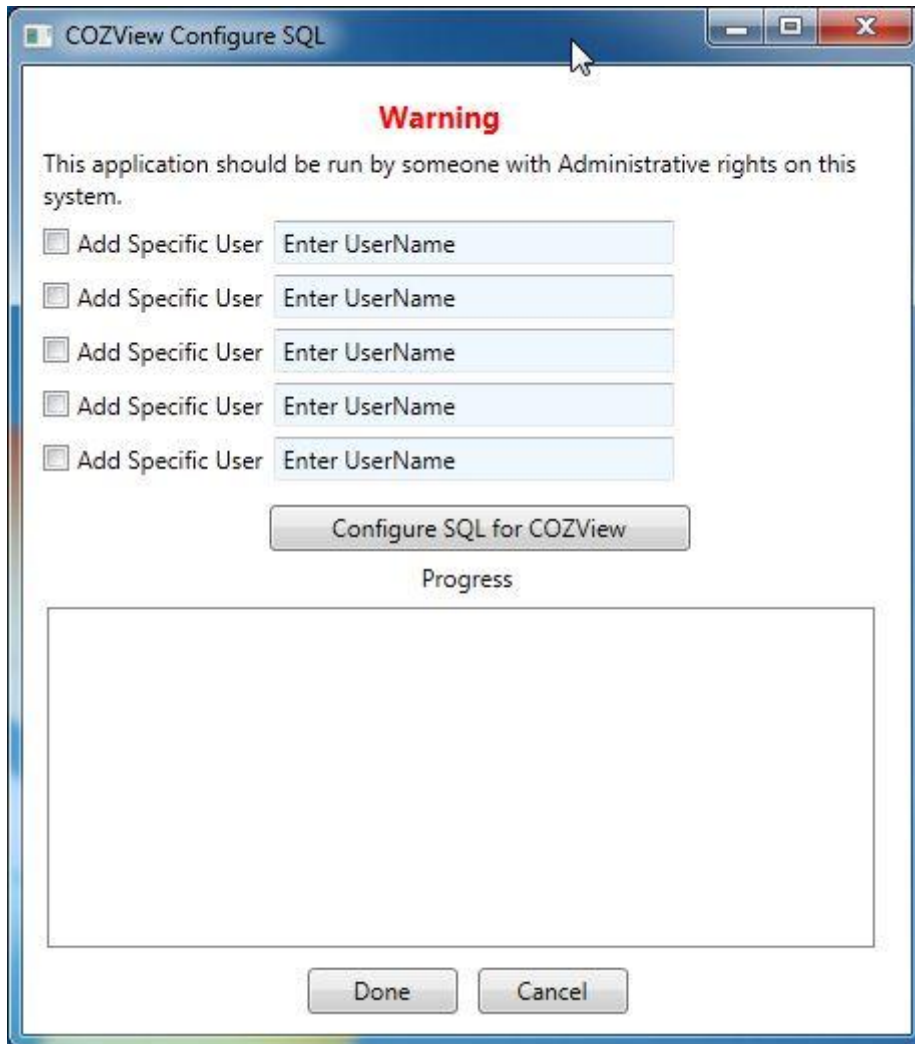
Close SQL Server Configuration Manager by clicking the X in the upper right corner.

One time COZView SQL Configure

Click Start followed by All Programs then scroll to Nitec LLC, click to expand then scroll to COZView Setup Utilities, then click to expand and select COZView SQL Configure.



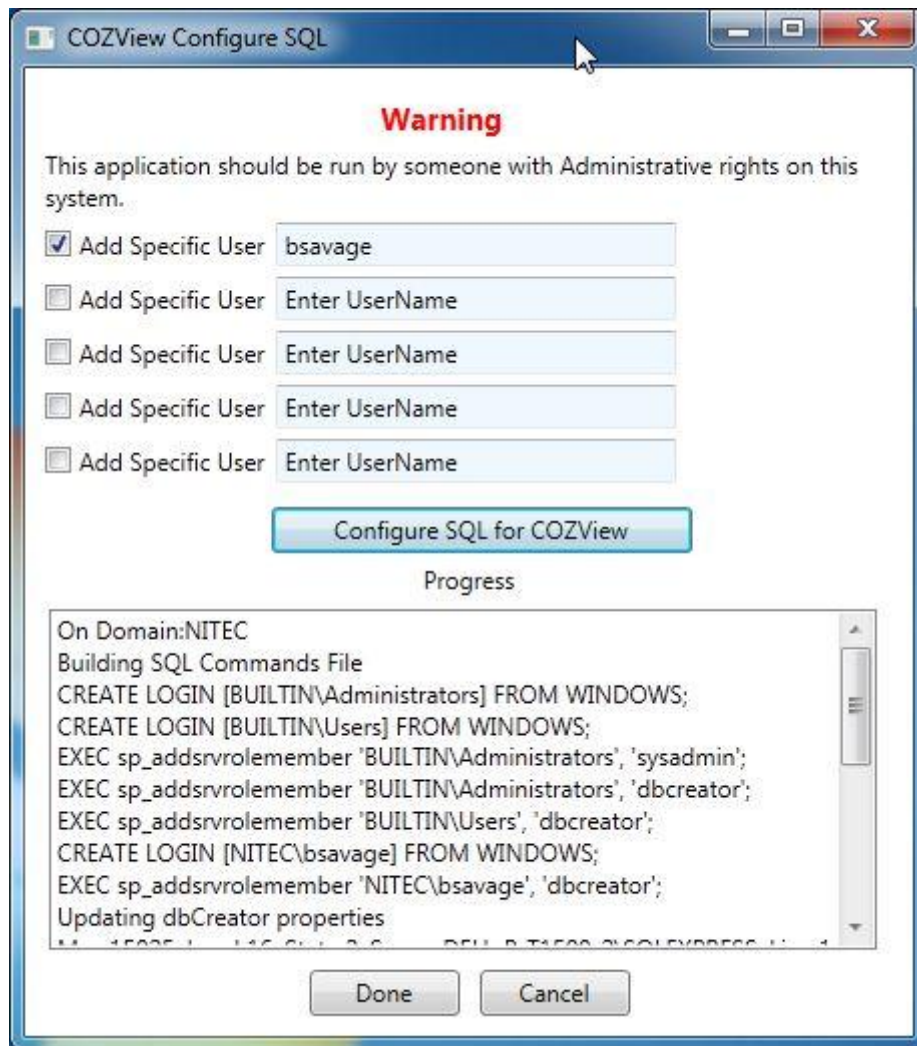
The following window will open.



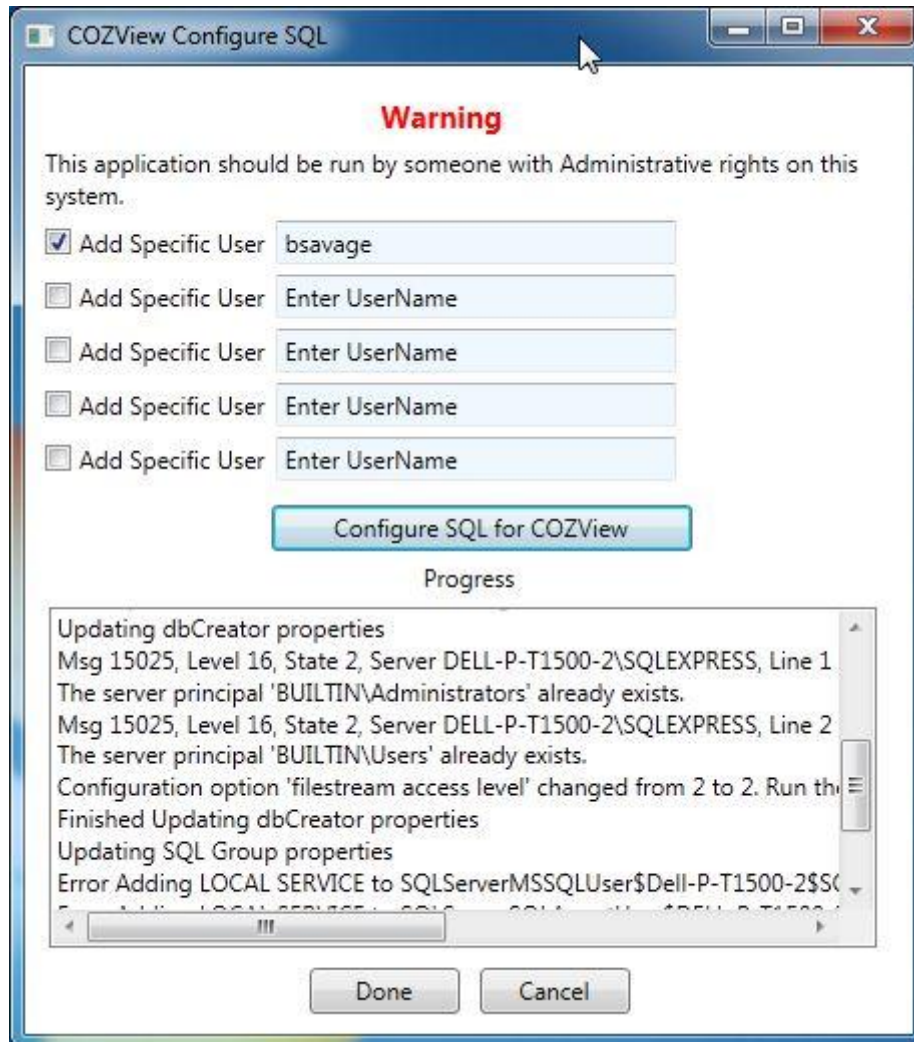
Up to five users can be configured per time. Click the checkbox's and insert valid user names for regular users (non Administrative) who will be using COZView/COZSim. For Domain Users the Domain is not needed.

Click the **Configure SQL for COZView** button.

Example



Messages in the Progress window about existing users and roles are normal.



Click Done to exit.

As a precaution Start SQL Configuration Manager again (see page 10); select **SQL Server Services** if needed. Then Right Click “SQL Server (SQLEXPRESS)” and select **Restart** from the popup.

The installation should be complete and COZView icon can be selected from the desktop to start COZView/COZSim.

4 One Time Intel Fortran Redistributables Install

Click Start followed by All Programs then scroll to Nitec LLC, click to expand then scroll to COZView Setup Utilities, click to expand then select Intel Fortran Redistributables.

A message box will appear stating that “Intel IA32 Redist from Path:.....” will appear. Click OK.

A standard installation for Intel IA32 Fortran redistributables will appear, take all the default options.

If this system is running Windows 7 64bit a message box will appear stating that “Intel Intel64 Redist from Path:.....” will appear. Click OK.

A standard installation for Intel Intel64 Fortran redistributables will appear, take all the default options.

5 SQL Server

COZView utilizes Microsoft SQL Server 2008 Express as its database. If older versions of SQL are installed which utilize an Instance name of SQLEXPRESS, Microsoft SQL Server 2008 Express will not install correctly. Check your Start All Programs list for references to other SQL versions such as Microsoft SQL Server 2005 Express. It may be necessary to uninstall these for Microsoft SQL Server 2008 Express to install correctly.